



MMC CORPORATION BERHAD
CORPORATE BROCHURE



RESILIENCE THROUGH OPERATIONAL EXCELLENCE

CORPORATE OVERVIEW



MMC CORPORATION BERHAD is a leading utilities and infrastructure group with diversified businesses in Malaysia and abroad

Our Vision

To be a Premier Utilities and Infrastructure Group

We are driven by a commitment to build a better world for all

Our Mission

Excellence in our Core Business Segments

- Maximise shareholder value
- Service excellence to stakeholders
 - Lead in value innovation
 - Be the preferred employer

We serve our stakeholders with a steadfast commitment to excellence

Our Core Values

Integrity **I**nnovation **T**eamwork **E**xcellence **C**ommitment

Our actions are guided by our core values, setting standards in the way we work

The Value We Create

We connect people, goods and businesses across the globe

We drive the nation's growth and progress by providing energy, gas and water for homes and industries

We build infrastructures that afford our society the convenience they enjoy today

We masterplan the growth of industries that drive the nation's economy

Together, the scale of our operations makes us one of Malaysia's key players in nation building

ABOUT US

Our multi-disciplinary expertise as a utilities and infrastructure provider are divided into four core business divisions:

Ports and Logistics



We are one of the 10 largest port operators in the world with a total container handling capacity across all ports in Malaysia of 21.9 million TEUs

Port Operations in Malaysia

- Pelabuhan Tanjung Pelepas Sdn Bhd
- Johor Port Berhad
- Northport (Malaysia) Berhad
- Penang Port Sdn Bhd
- Tanjung Bruas Port Sdn Bhd
- Yan Port STS (Andaman Port)
- SPT Services Sdn Bhd

Port Operations in Saudi Arabia

- Red Sea Gateway Terminal Company Limited operates a container port terminal within the Jeddah Islamic Port.

Cruise Terminals

- Port Klang Cruise Terminal Sdn Bhd
- Swettenham Pier Cruise Terminal
- Langkawi Cruise Centre Sdn Bhd

Logistics Operator

- Kontena Nasional Berhad is one of the largest integrated logistics companies in Malaysia.
- KTMB MMC Cargo Sdn Bhd is a company responsible for the development and operations of the rail freight business.

Energy and Utilities



We are a total energy solutions provider

Power Generation and Water Desalination

Through Malakoff Corporation Berhad ("Malakoff"), we are the largest Independent Power Producer in Malaysia with a total effective thermal power generation capacity of 5,342 MW and Renewable Energy capacity of 39 MW. Malakoff's international assets include power and water ventures in Saudi Arabia, Bahrain and Oman, with an effective power generation capacity of 588MW and 472,975 m³/day of water desalination.

Primary Distributor of Natural Gas

Through Gas Malaysia Berhad we supply reticulated Natural Gas and Liquefied Petroleum Gas to residential, commercial and industrial customers in Peninsular Malaysia.

Water Solutions Provider

Through Aliran Ihsan Resources Berhad, we are a pioneer in wastewater reclamation technology and a water treatment specialist.

Environmental Solutions

Through Malakoff's subsidiary, Alam Flora Sdn Bhd, we are one of the leading environmental management companies in Malaysia specialising in managing and reducing waste with minimal environmental impact.



Engineering



ABOUT US

We undertake engineering and construction works for key civil and infrastructure projects in the country

Current Projects

- Turnkey Contractor for the entire Klang Valley Mass Rapid Transit ("KVMRT") Putrajaya Line
- Main contractor for the Langat Centralised Sewerage Treatment Plant
- Engineering, Procurement, Construction and Commissioning of PGU-1 Gas Pipeline replacement project ("GRAPHITE Project")
- Asia Digital Engineering MRO Hanger and New Taxiway at KLIA
- Land Reclamation, Ground Improvement and Infrastructure Works at Tanjung Adang, Port of Tanjung Pelepas
- Tanjung Bin Access Road
- Infrastructure and Earthwork at Kulim Northern Technocity
- Development of Container Block J at Northport
- Single Storey Warehouse at Kontena Nasional
- Annex Single Storey Warehouse at Johor Port
- PPFT1B – Berthing Facilities for Penang Port Sdn Bhd
- Temporary Empty Container Storage Yard at PTP

Prior Projects

- Construction of Langat 2 Water Treatment Plant Phase 1
- Construction of Sungai Pulai Bridge
- Development of new container yard for Johor Port Berhad
- Design and Build contractor for the Senai International Airport arrival hall expansion and new passenger holding lounge
- Construction of three warehouse for Northport (Malaysia) Bhd
- Construction of Detention Pond No. 12 and infrastructure works for Senai Airport City
- Design and Build contractor for the 50-metre jetty extension at Tanjung Bruas Port
- Implementation of the elevated section, main contractor for the underground work package of the KVMRT Kajang Line
- 329-kilometre Ipoh-Padang Besar Electrified Double Tracking Project

Industrial Development



We develop and manage approximately 5,000 acres of industrial developments in Iskandar Malaysia, Johor and Kulim, Kedah

Senai Airport City

A master planned 2,718-acre integrated industrial development comprising of Free Industrial Zone and Free Commercial Zone, hi-tech manufacturing and mixed development areas targeting various industrial segments strategically located within a mature industrial ecosystem of Senai, Johor.

Tanjung Bin Industrial Park

A master planned 2,255-acre industrial development catering for medium and heavy industries, strategically located opposite to Port of Tanjung Pelepas, Johor.

Northern Technocity

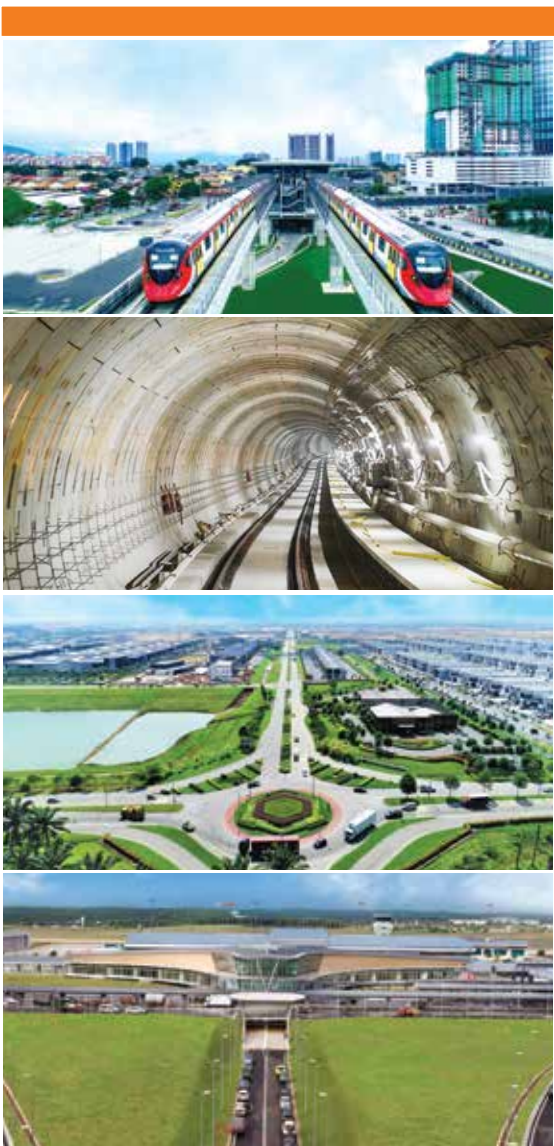
A master planned 354-acre industrial development within Kulim Hi-Tech Park, Kedah catering to high technology industrial segments with seamless connectivity to port and airport in Penang.

Other Business



Airport Operator

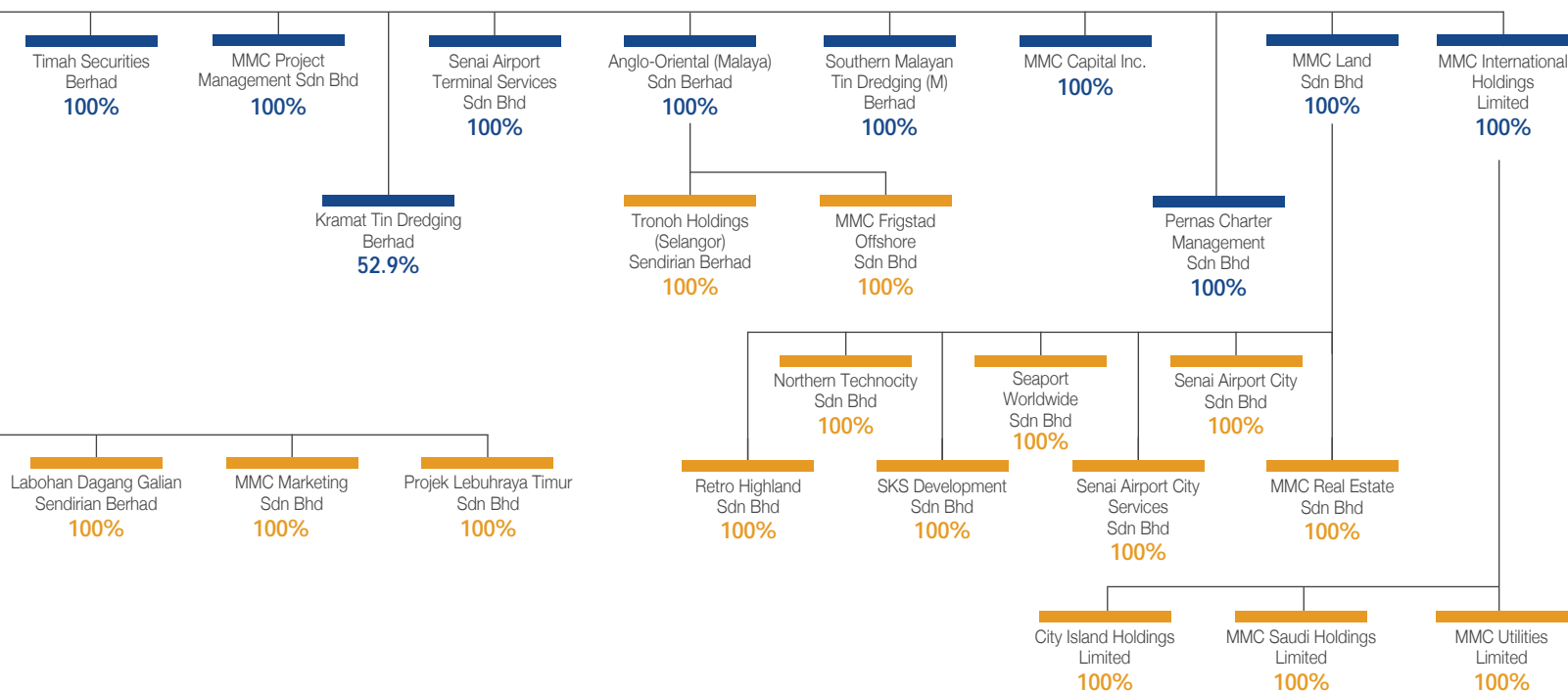
Senai Airport Terminal Services Sdn Bhd is the operator of Senai International Airport in Johor and Kertih Airport in Terengganu.



as at 03 October 2024



ATION BERHAD



JOINT VENTURES

KTMB MMC Cargo Sdn Bhd	49%
MMC-Gamuda Joint Venture Sdn Bhd	50%
MMC Gamuda KVMRT (PDP) Sdn Bhd	50%
MMC Gamuda KVMRT (T) Sdn Bhd	50%
MMC Gamuda KVMRT (PDP SSP) Sdn Bhd	50%
Projek Smart Holdings Sdn Bhd	50%
UEM MMC Joint Venture Sdn Bhd	50%
Salcon MMCB AZSB JV Sdn Bhd	34%
Salcon MMCES AZSB JV Sdn Bhd	50%
Red Sea Housing Malaysia Sdn Bhd	51%
Port Klang Cruise Terminal Sdn Bhd	50%
DORIS MMC Sdn Bhd	50%

ASSOCIATES

Malakoff Corporation Berhad	38.45%*
P.T. Ritra Konnas Freight Centre	33%
Gas Malaysia Berhad	30.9%
Jazan Economic City Land Limited	24%
Red Sea Ports Development Company	20%
Red Sea Gateway Terminal Company Limited	12%
Konsortium Bernas MMC SPPM Sdn Bhd	10%
Ajil Minerals Sdn Bhd	49%
Red Sea Ports Development International Limited	20%
Red Sea Gateway Terminal International Limited	12%
RSgt Bangladesh Limited	12%

* excluding treasury shares

Under Liquidation

KN Loginfra Sdn Bhd
(Under Members' Voluntary Liquidation)

KN Maritime Services Sdn Bhd
(Under Members' Voluntary Liquidation)

Konnas Prolink Sendirian Berhad
(Under Members' Voluntary Liquidation)

Senai Airport Sdn Bhd
(Under Members' Voluntary Liquidation)

BUSINESS STRENGTHS AND COMPETITIVE ADVANTAGES

MMC's business model enables the Group to derive a set of business strengths and competitive advantages in its value creation. This unique set of strengths and advantages are further enhanced by leveraging on operational strategies and excellence. The Group's operating company constantly leverage on their respective strengths and competitive advantages to continuously improve and leverage market share.

MMC further solidifies its position as one of Malaysia's premier utilities and infrastructure player via the constant pursue and development and a wide range of specialised infrastructure development projects.



FOOTPRINT IN MULTIPLE BUSINESSES

- The Group has a diversified business presence, spanning a wide range in strategic and essential business sectors
- By occupying dominant or key positions in its respective value chains, MMC is optimally positioned to ensure the realisation of strategic objectives and the very execution of business plans and goals



BUSINESS AND OPERATIONAL SYNERGY

- The Group is able to leverage on its many operating companies' resources and competencies to offer integrated solutions or offerings
- Synergy can be generated and harness when projects/business opportunities can be identified and executed within the Group itself



BALANCED MIX OF BUSINESS PORTFOLIO WITH RECURRING INCOME

- The Group holds a mix of long-term concessions, under Built Operate Transfer ("BOT"), Built Operate Own Transfer ("BOOT") and Build Own Operate ("BOO") contracts as well as owns businesses that deliver long-term recurring income and earnings



STRONG ASSET AND FINANCIAL BASE

- The Group's robust financial position allows it to efficiently source for capital and subsequently fund development and projects in order to continuously enhance shareholders' value



PROVEN EXPERTISE AND TRACK RECORD

- Through its operating companies, the Group has established a long-standing reputation for undertaking many of the nation's iconic projects and for successfully delivering projects' commitments as per schedule and within budget



HIGHLY EXPERIENCED AND PROFESSIONAL WORKFORCE

- The Group's strongest asset is the competence and skills of its people, who bring a vast range of professional capabilities and experience to steer the Group's growth



GOOD MARKETPLACE PRACTICES AND CORPORATE GOVERNANCE

- The Group's commitment towards accountability, transparency and good governance has further strengthened the organisation's business model and organisational structure and at the same to safeguard shareholder and stakeholder interest



STRONG PROJECT MANAGEMENT EXPERTISE

- Our credible reputation built on impeccable track record of successful project coordination and management ensures that the Group continues to be at the forefront of invitation to participate in major tenders for infrastructure developments



Ports and Logistics

Serving as the Nation's Global Gateway

MMC's ports are the strategic gateways for national trade and commerce, vital to spurring economic growth. Within Malaysia's export-driven open economy, our ports generate tremendous value across a large number of industries, sectors and supply chains.





Energy and Utilities

Powering the Nation, Illuminating a Brighter Future

Through Malakoff, Alam Flora, Gas Malaysia and AIR Berhad, MMC's Energy and Utilities Division continues to meet the nation's basic utility needs, while embracing the opportunities of a liberalised market environment. We continue to drive socio-economic progress and deliver a more sustainable future that offers brighter prospects.





Engineering

Transforming Landscapes, Building the Nation

Exemplifying resilience and strength amidst change and challenge, MMC's Engineering Division rises with the tide to deliver many of the nation's iconic engineering and infrastructure projects. The division stands tall on an enduring legacy of having significantly contributed to nation building and for continuing to reshape a better future for Malaysia and Malaysians.





Industrial Development

Driving Investments Spurring Economic Growth

A leading master developer for three industrial developments totaling approximately 5,000 acres, namely Senai Airport City (“SAC”), Tanjung Bin Industrial Park (“TBIP”) and Northern Technocity (“NTC”). All developments are strategically located with connectivity to maritime ports via a network of highways.





www.mmc.com.my

MMC CORPORATION BERHAD 197601004261 (30245-H)

Ground Floor, Wisma Budiman
Persiaran Raja Chulan
50200 Kuala Lumpur
Malaysia
Tel : +603 2071 1000
Fax : +603 2026 1921