

**FOR IMMEDIATE RELEASE**

## **ENSURING THE NATION'S TRADE CONTINUES TO FUNCTION DURING HARI RAYA**

**JOHOR BAHRU, 11 May 2021** – Johor Port Berhad (Johor Port), a member of MMC Group is part of the essential services to the country in which the port's operations provide an important service in ensuring that the country's trade continues to function.

For more than 40 years, Johor Port, the Multi-Purpose Port facility in Pasir Gudang, Johor has been ensuring that Malaysians from all walks of life are able to get what they need to stay secure, warm and healthy. The employees across Johor Port have been working to keep the country's gateway at the Southern region open all year round even during the holidays and the festive season, ensuring both import and export of foods, essential products, energy and fuel are transported to their destinations on time; which ultimately means that they could not be with their families and loved ones during the Hari Raya.

"Johor Port plays a vital role in the local as well as global supply chain. We transport edible and non-edible goods for both economic and survival needs. Not many people are aware of the good work and contribution that the port's employees are making every day to keep our country supplied with the goods that we need. They are working tirelessly around the clock and are the backbone of not only the nation's local supply chain but also the trade and supply chain in the Asia Pacific region. Without them, the supply chain will be interrupted," said Md Derick Basir, Chief Executive Officer of Johor Port Berhad.

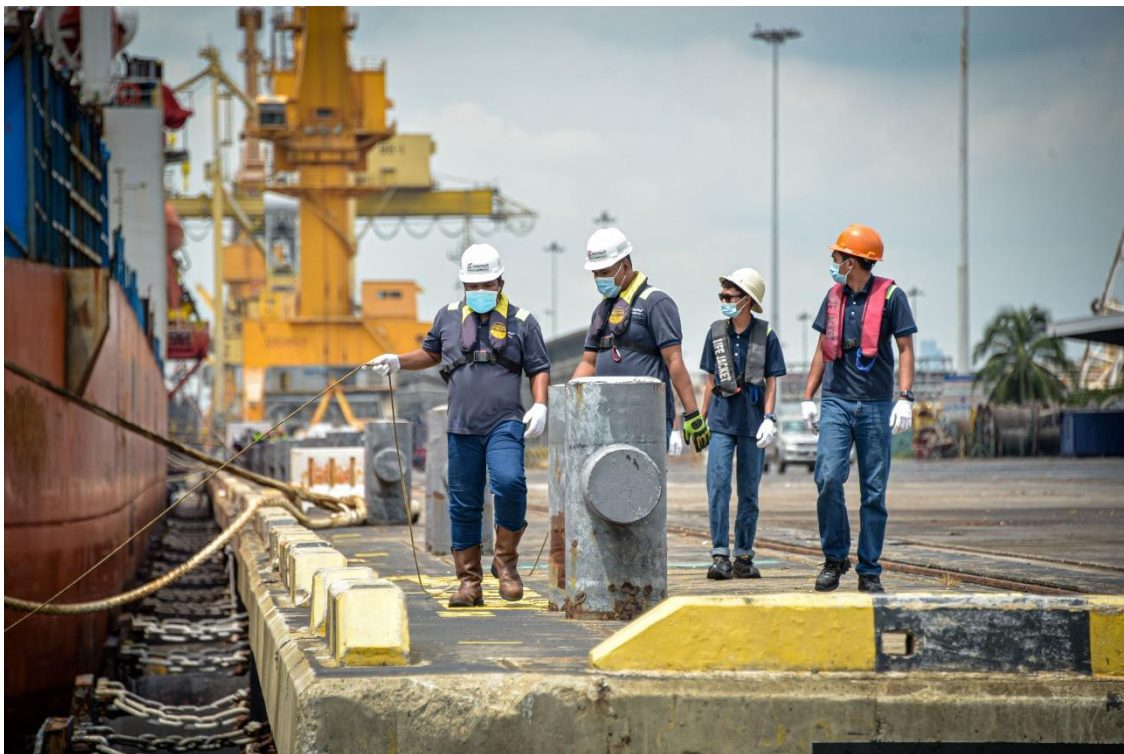
"Although I have to work during Hari Raya, I still celebrate the Hari Raya with my colleagues at our workplace and the company has treated us with Hari Raya dishes. I fully understand that my duty here at Johor Port is critical for others," said Lokmanul Naim Ibrahim, a Quay Crane Operator at Johor Port who is responsible to move the cargo from vessels and vice versa.

"I am proud to be part of the port's industry frontliners, knowing that my job here at Johor Port allows me to contribute to the people's well-being indirectly. Working during Hari Raya is my small sacrifice to others in which I have learned that we don't have to do a big thing to contribute.

After all, Hari Raya is celebrated for one month, I can still celebrate Hari Raya even if it's a bit later than the others," said Muhammad Afif Ad Dailami Ridzwan, who works as a Rubber Tyred Gantry Crane Operator (RTG crane operator) at Johor Port.

As part of the essential services, Johor Port keeps essential goods and trade flows moving by keeping the port open, receiving vessels and its cargo, enabling people to buy food, medicine and vital goods in the neighbourhood shops, even though the country is in a very strict lockdown.

Being the Southern Gateway Multi-Purpose Port, it is Johor Port's wish that there is more awareness from the public about the Port industry and the contribution done by the port's employees who are part of the nation's unsung heroes. These individuals continue to serve the nation, whether rain or shine and deserve to receive recognition for their contributions.



*Photo caption: Johor Port's employees, the unsung heroes working tirelessly and selflessly to ensure the country supplied with food, fuel and important supplies at all times.*

###

### **About Johor Port Berhad**

*Johor Port Berhad, a Member of MMC Group is an integrated multi-purpose port facility located at the southern tip of Peninsula Malaysia providing a comprehensive range of port services to meet the individual needs of its customer. Commencing operation in 1977 as the original Southern Gateway Multi-Purpose Port in Malaysia, Johor Port currently operates a total area of 1,000 acres, 660 acres of which are designated as Free Zone.*

*With 24 berths and a total berthing length of 4.9 km, the services and facilities within Johor Port include the Container Terminal, Bulk and Break Bulk Terminal, Liquid Terminal and Warehousing Facilities. As the 1st port in Malaysia to be accorded with Free Zone status, Johor Port is the appointed Free Zone Authority for the management of its Free Zone area.*

*Johor Port is the largest Palm Oil terminal in the world and was designated as an approved London Metal Exchange (LME) location in 2004. Johor Port is also one of the largest discharging points for Rice and Cocoa in Malaysia as well as being one of the biggest Terminals in Malaysia for Fertilizer and Cement.*

*For more information, please visit <http://www.johorport.com.my/>*

### **About MMC Corporation Berhad**

*MMC Corporation Berhad (MMC Group) is a leading utilities and infrastructure group with diversified businesses under four divisions, namely Ports and Logistics, Energy and Utilities, Engineering, and Industrial Development.*

*Its key businesses under the Ports and Logistics division include the port operations of Pelabuhan Tanjung Pelepas Sdn Bhd, Johor Port Berhad, Northport (Malaysia) Bhd, Penang Port Sdn Bhd, Tanjung Bruas Port Sdn Bhd and Kontena Nasional Berhad, a logistics provider. Internationally, MMC has presence in Saudi Arabia via Red Sea Gateway Terminal Company Limited, a container port terminal within the Jeddah Islamic Port.*

*Under the Energy and Utilities division, MMC is the single largest shareholder of both Malakoff Corporation Berhad, the country's largest Independent Power Producer and Gas Malaysia Berhad, a total energy solutions provider. Through Aliran Ihsan Resources Berhad, we are a pioneer in wastewater recycling technology and a water treatment specialist.*

*MMC's Engineering division has played a leading role for the implementation of the entire project including the underground works package in completing the 51 km Klang Valley Mass Rapid Transit (KVMRT) Sungai Buloh-Kajang project (SBK Line) and is now the main contractor for the entire Sungai Buloh-Serdang-Putrajaya project (SSP Line). MMC is also currently, undertaking key civil and infrastructure projects in the country namely Langat Centralised Sewerage Treatment Plant and Langat 2 Water Treatment Plant.*

*Notably, MMC completed the 329 km Ipoh-Padang Besar Electrified Double Tracking Project and the innovative Stormwater Management and Road Tunnel (SMART) motorway, the first of its kind, dual-purpose tunnel in the world.*

*MMC's Industrial Development division develops and manages approximately 5,000 acres of industrial developments in Iskandar Malaysia, Johor and Kulim, Kedah, which includes the Senai Airport City, Tanjung Bin Industrial Park and the Northern Technocity.*

*In other business, MMC wholly-owns Senai Airport Terminal Services Sdn Bhd, the operator of Senai International Airport in Johor Bahru – an emerging southern aviation hub and important gateway to Iskandar Malaysia.*

**Enquiries**

Please log on to [www.mmc.com.my](http://www.mmc.com.my) or call:

*Norhidawati Yahaya, Manager, Corporate Communications, Johor Port Berhad*

*Tel: +607 2535 888 ext 672*

*Email: [norhidawati@johorport.com.my](mailto:norhidawati@johorport.com.my)*

*Azlina Ashar, Head of Group Corporate Communications, MMC Corporation Berhad*

*Tel: +603 2071 1124, Fax: +603 2026 2431*

*Email: [azlina.ashar@mmc.com.my](mailto:azlina.ashar@mmc.com.my)*